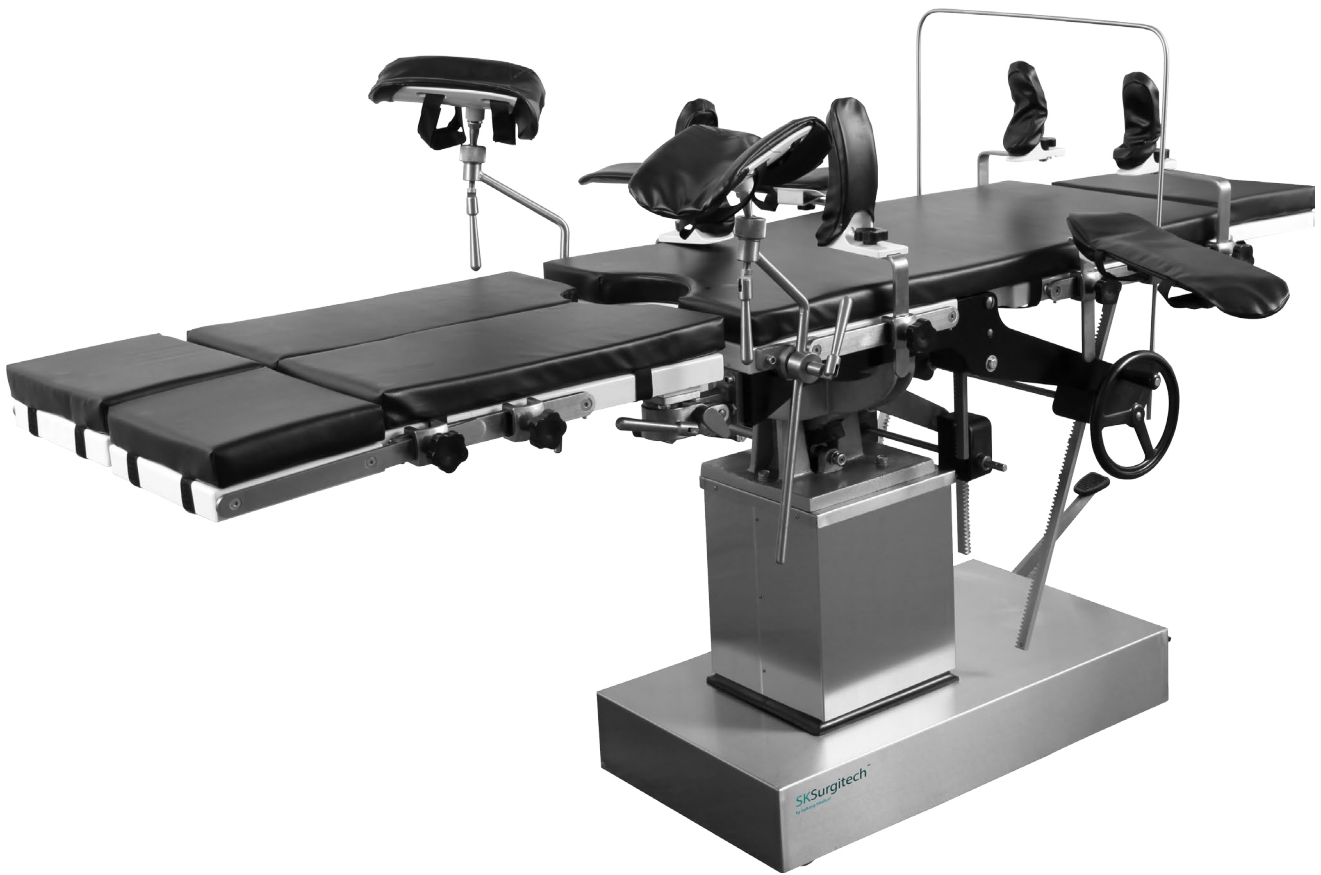


# AM052C-1

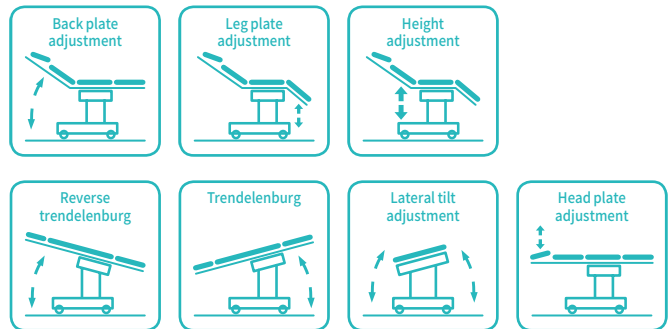
## MANUAL OPERATING TABLE

Registration code: SKT-C



# AM052C-1

## FEATURES AND HIGHLIGHTS



### Technical parameters

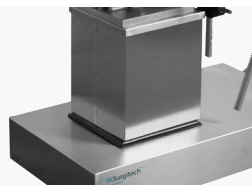
External Size (LxWxH)	2000x480x800-1050 mm
Back Plate Up/Down	80°/18°
Head Plate Up/Down	45°/90°
Leg Plate Down	90°
Leg board Outwards	90°
Trendelenburg/Reverse Trendelenburg	20°/30°
Lateral Tilt Left/Right	18°/18°
Patient Weight Capacity	185kg

### Technical configuration

<input checked="" type="checkbox"/> Bed Frame	1pc
<input checked="" type="checkbox"/> Anesthesia Screen Frame	1pc
<input checked="" type="checkbox"/> Mattress	1set
<input checked="" type="checkbox"/> Arm Support with Cushion	2pcs
<input checked="" type="checkbox"/> Leg Support with Cushion	2pcs
<input checked="" type="checkbox"/> Shoulder Support with Cushion	2pcs
<input checked="" type="checkbox"/> Body Support with Cushion	2pcs
<input checked="" type="checkbox"/> Foot Support with Cushion	2pcs
<input checked="" type="checkbox"/> Oil Pot (With Oil)	1pc

#### Material

The base seat and upright column covering are made of high quality 304 stainless steel, which is anti-corrosive and can be easily cleaned.



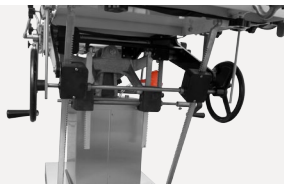
#### Braking System

Foot treadle brake device which is easily for moving operating table.



#### Control System

Various actions are controlled by hydraulic pneumatic system and mechanical driven system, all the adjustments of the table are performed on both sides of the table.



#### Height Adjustment

Foot step hydraulic elevating, Imported Y type sealing ring and is durable.



#### Mattress

The mattress is wrapped with imported artificial leather. High-density memory sponge is formed in one piece, with no seam.



#### Special Leg Plate Operations

The legs folded plates are used servo-assisted gas spring, handle operation, light and flexible; leg plate could be outreach and fold down, convenient for urology and anorectal surgery.



Shoulder Support with Cushion



Body Support with Cushion



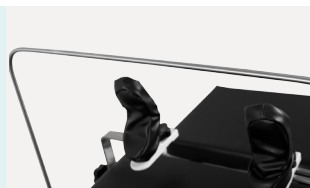
Arm Support with Cushion



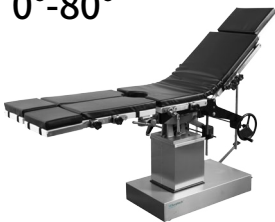
Leg Support with Cushion



Anesthesia Screen Frame



Back Plate Up  
0°-80°



Back Plate Down  
0°-18°



Head Plate Up  
0°-45°



Head Plate Down  
0°-90°



Reversed Trendelenburg  
0°-30°



Trendelenburg  
0°-20°



Lateral Tilt Left  
0°-18°



Lateral Tilt Right  
0°-18°



Height Adjustment  
800-1050<sub>mm</sub>



Leg Plate Down  
90°



Leg Board Outwards  
90°





## **CONSTANT INNOVATION**



Design



Research



Manufacturing



Maintenance



Service

## **WORLDWIDE BRANCHES**

### USA

**Saikang Medical Technology, Inc.**  
17800 Castleton St Ste 180,  
City of Industry, 91748, California.  
Tel.: +1 949648 2776

### United Kingdom

**UK Healthward International Ltd.**  
Dept. 111, 196 High Road Wood  
Green, N22 8HH, London.  
Tel.: +44 2032399738

### Russia

**Saikang Medical Russia LLC**  
Truda 174,  
454080 Chelyabinsk.  
Tel.: +7 (351) 214 5566 / 8811 / 1516

### East Africa





**Saikang Medical Solutions Ltd.**  
Viraj Complex Unit 3, Mombasa  
Road, P.O. Box 14262-00800, Nairobi.  
Kenya.  
Tel.: +254 733 704 690

### Middle East

**Saikang Medical Supplies LLC**  
X22-S03 England Cluster,  
International City, Dubai.  
United Arab Emirates.  
Tel.: +20 128 8962497

**SKSurgitech™**  
by Saikang Medical

Jiangsu Saikang Medical Equipment Co., Ltd.  
STOCK CODE: 870098

 No. 35, Lehong Road · Zhangjiagang (Jiangsu) · China  
 +86 18021231901 ·  24/7  
 export@sksurgitech.com  
 www.sksurgitech.com



Company video



General catalogue