



A200

ELECTRIC OPERATING TABLE

Registration code: SKL-A

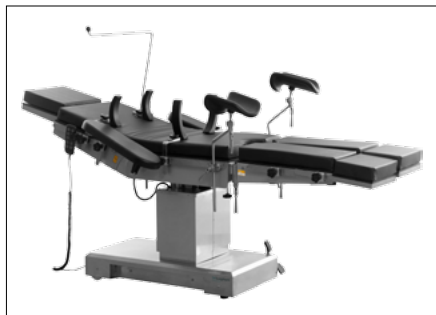


SKSurgitech[™]
by Saikang Medical

Care you precisely

A200

FEATURES AND HIGHLIGHTS



Technical parameters

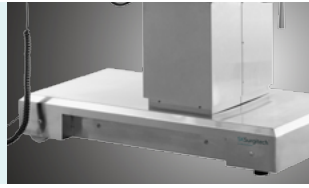
External size (LxWxH):	2000x500x(660-960)mm
Reverse trendelenburg:	0-22°
Trendelenburg:	0-30°
Lateral tilt left/right:	0-20°
Head plate up/down:	50°/90°
Back plate up/down:	70°/15°
Leg plate down:	0-90°
Leg plate outwards:	0-90°
Kidney bridge elevation:	0-120mm
Horizontal sliding:	0-300mm
Safe working load:	250kg

Technical configuration

<input checked="" type="checkbox"/> Arm support	2 pcs
<input checked="" type="checkbox"/> Leg support	2 pcs
<input checked="" type="checkbox"/> Body Support	2 pcs
<input checked="" type="checkbox"/> Shoulder Support	2 pcs
<input checked="" type="checkbox"/> Slider	12 pcs
<input checked="" type="checkbox"/> Tightener	2 pcs
<input checked="" type="checkbox"/> Anaesthetic Screen	1 pc
<input checked="" type="checkbox"/> Hand controller	1 pc
<input checked="" type="checkbox"/> Handwheel	1pc

Material

The chassis cover is made of 1.6mm high quality 304 stainless steel, which is welded by the robot seamlessly. The shape is beautiful, stable and firm.



Mattress

Removable memory mattress, made of high density sponge, good resilience, anti-static, anti-bedsores, anti-bacterial and anti-impact.



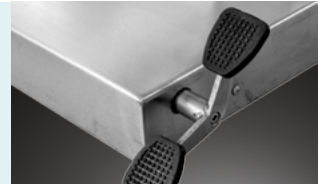
Control System

Electric control the height lifting, trendelenburg and reverse trendelenburg, tilt, back plate folding up and down, easy and convenient operation.



Braking system

Mechanical brake device at the side of the base, with fixed or moving function, flexible and reliable.



Hand controller

All functions are controlled by the hand controller.



Kidney bridge

With kidney bridge, the lifting range is up to 120mm.



Battery could support

Battery could support about 50-80 complete operation cycles. Working time could be last for one week according to useage and help to keep the operating table running in the event of power failure.



Horizontal movement

300mm horizontal movement function, with high strength phenolic resin table top, could be used for X-ray and C-arm.



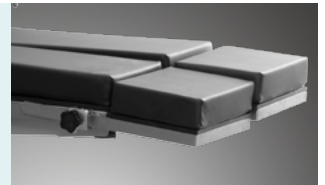
Leg plate

The leg plate is controlled by the air spring, which makes the operation more effortless and smooth.



Foot plate

Standard foot plate could be used to lengthen the operating table, also could be used as a kneeling plate.



Armrest



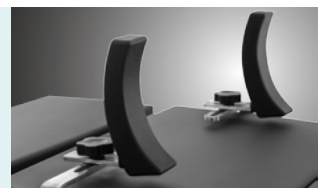
Anesthesia Frame



Leg Crutches



Shoulder Support



Body Supporter



Professional functions

Lowest position of table top

660mm



Highest position of table top

960mm



Back plate up/down

-15°-70°



Horizontal movement

0-300mm



Reversed trendelenburg

0°-22°



Trendelenburg

0°-30°



Right lateral tilt

0°-20°



Left lateral tilt

0°-20°



Head plate upward

0°-55°



Head plate downward

0°-90°



Leg section evagination

0°-90°



Leg plate down

0°-90°



Kidney bridge elevation

0-120mm





CONSTANT INNOVATION



Design



Research



Manufacturing



Maintenance



Service



WORLDWIDE BRANCHES

USA

Saikang Medical Technology, Inc.
17800 Castleton St Ste 180,
City of Industry, 91748, California.
Tel.: +1 949648 2776

United Kingdom

UK Healthward International Ltd.
Dept. 111, 196 High Road Wood
Green, N22 8HH, London.
Tel.: +44 2032399738

Russia

Saikang Medical Russia LLC
Truda 174,
454080 Chelyabinsk.
Tel.: +7 (351) 214 5566 / 8811 / 1516

East Africa

Saikang Medical Solutions Ltd.
Viraj Complex Unit 3, Mombasa
Road, P.O. Box 14262-00800, Nairobi.
Kenya.
Tel.: +254 733 704 690

Middle East

Saikang Medical Supplies LLC
X22-S03 England Cluster,
International City, Dubai.
United Arab Emirates.
Tel.: +20 128 8962497

SKSurgitech™
by Saikang Medical

Jiangsu Saikang Medical Equipment Co., Ltd.
STOCK CODE: 870098

📍 No. 35, Lehong Road · Zhangjiagang (Jiangsu) · China
☎️ +86 18021231901 · 🕒 24/7
✉️ export@sksurgitech.com
🌐 www.sksurgitech.com



Company video



General catalogue